

Zambia EFA Country Profile 2014

General Context

A country located in southern Africa numbering approximately 14.1 million inhabitants, Zambia, with GDP per capita of US\$ 1,458 in 2012, is ranked as a lower-middle income country. Over the past 12 years, real GDP per capita growth has been 2.7 percent per year, real growth in national wealth (5.9 percent per year) having been absorbed in part by the significant increase in the population (2.8 percent per year). In 2012, the primary school-aged population (for a seven-year cycle) represented 19.6 percent of the total population. This rather high level indicates that demography represents a real constraint on the development of the education system. The prevalence of HIV&AIDS is very high (12.5 percent) compared to the Sub-Saharan African average (5.3 percent). The Human Development Index (HDI) ranks Zambia 163rd out of 187 countries.

Demographic and Macroeconomic Context (2012)

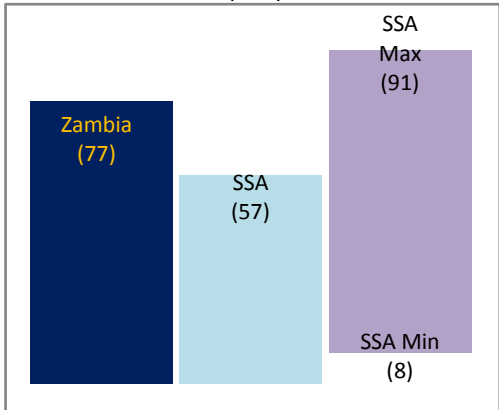
GDP per Capita (US\$)	1,458
Total Population ('000)	14,075
% of the Population of Primary School Age	19.6
% of Out-of-School Children of Primary School Age	4.5
HIV&AIDS Prevalence (15-49 years)	12.5%
HDI (Ranking)	163/187

Key EFA Indicators for 2012 or Most Recent Year

The African EFA Development Index for Zambia was 55.7 in 2000, reflecting a comparatively favorable situation with respect to Sub-Saharan Africa as a whole, whose index at this time was 39.3. The index has evolved considerably over the period, to reach 77.4 in 2012, in particular as a result of progress in terms of primary completion. This recent value places Zambia in a more favorable situation than the average Sub-Saharan African country (57.1). The primary completion rate (after seven years of education) has improved considerably (*Goal 2*) to reach 94 percent (against 63 percent in 2000). In contrast, the share of literate individuals aged 15 years and above

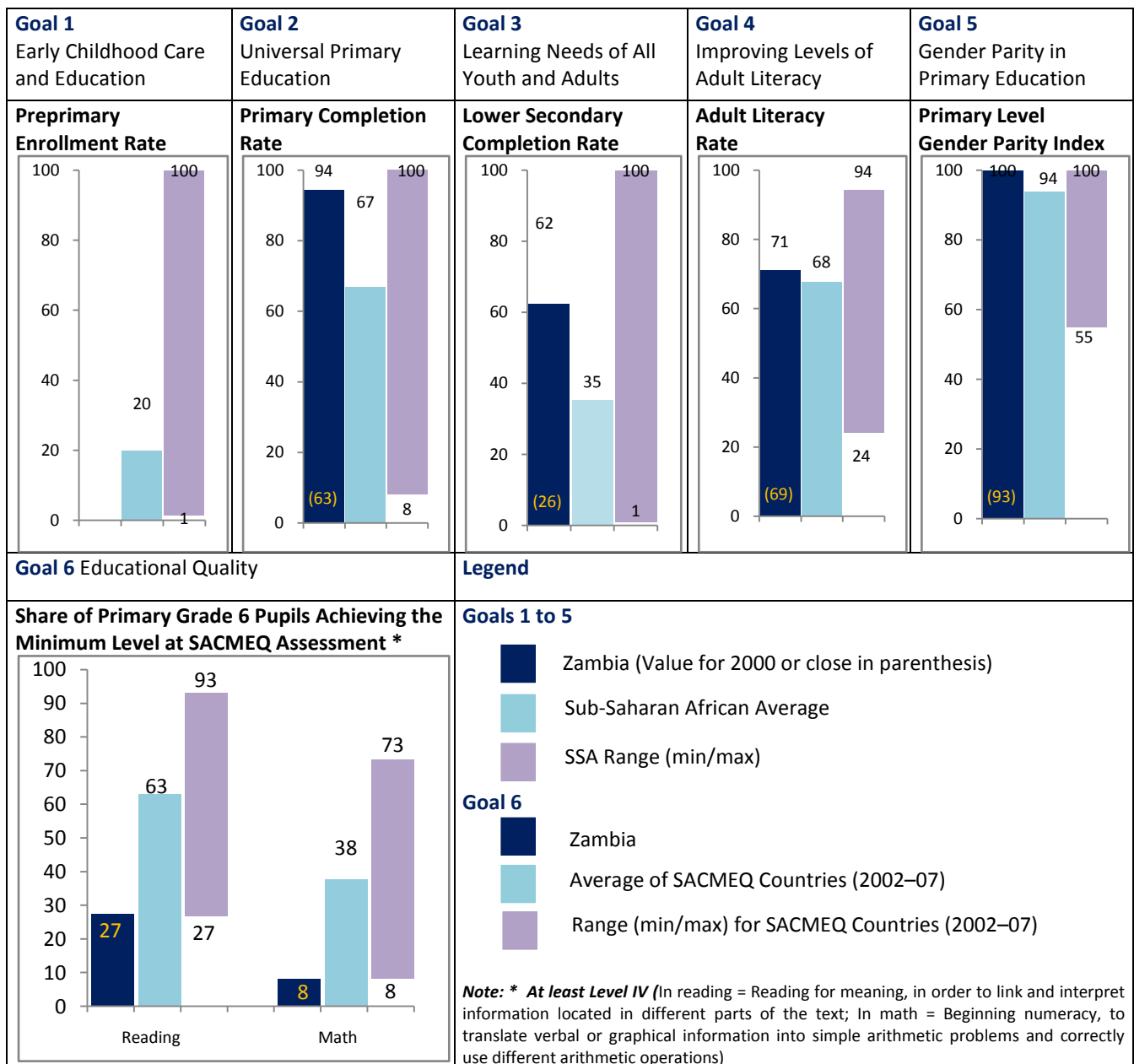
(*Goal 4*) has only gained two percentage points over the decade, from 69 percent in 2001 to 71 percent in 2010. Primary level gender parity (*Goal 5*), already satisfactory in 2000 (with an index of 93 percent) had been totally achieved by 2012 (with an index of 100 percent).

African EFA Development Index (EDI)



The other documented key EFA goal is that of the lower secondary completion rate, that has increased over twofold, from 26 percent in 2000 to 62 percent in 2011, placing it well above the regional average, of 35 percent. Information on preprimary enrollment (*Goal 1*) is not available.

Despite the performance of Zambia over the past ten years that has enabled the country to achieve primary-level gender parity and to move closer to universal primary education, efforts must still be deployed with respect to some goals, in particular in terms of the quality of learning, making it unlikely that the country will achieve all the EFA goals set by 2015.

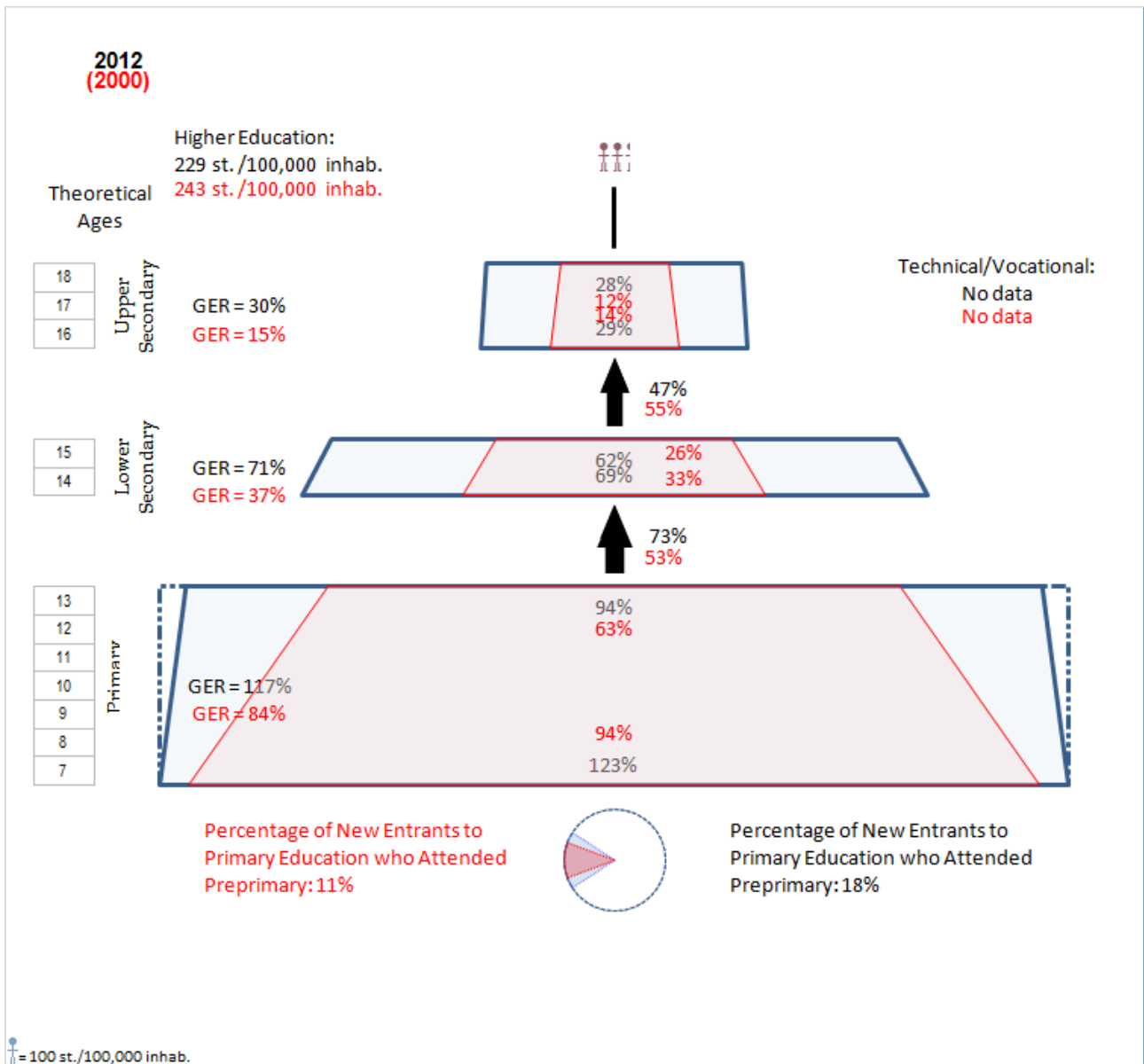


Enrollment: Education Pyramids 2012 or Most Recent Year

The data presented in the country profile, in particular those drawn from the schooling profile and education pyramids; enable to provide greater detail on the evolution of education (access, retention and transition) and equity indicators.

Primary education has progressed between 2000 and 2012 in every respect: access, which was rated at 94 percent in 2001, reached 123 percent in 2012 and retention throughout the cycle has evolved favorably over the period. As a result, the primary completion rate has improved to reach 94 percent in 2012. Secondary-level enrollment has also progressed over the period: the primary to secondary

transition has increased (73 percent of children completing primary gained access to lower secondary in 2012, against 53 percent in 2000) and the access rate to lower secondary has more than doubled over the period, from 33 percent to 69 percent. The completion for this cycle has considerably improved, from 26 percent in 2000 to 62 percent in 2012. Whereas 12 percent of a generation completed upper secondary in 2000, 28 percent did so in 2012. Information on the evolution of higher education is only available for the period between 2000 and 2005. It reveals a slight relative drop in enrollment, from 243 students per 100,000 inhabitants in 2000 to 229 students in 2005.



Equity in School Access and Schooling Careers 2012 or Most Recent Year

In terms of equity, it was noted earlier that gender parity has been achieved at the primary level. The same applies for upper secondary, where the girl/boy parity index is 0.94 (based on the GER). However, further efforts must be deployed at lower secondary, where the value of the index is only 0.84 (based on the GER).



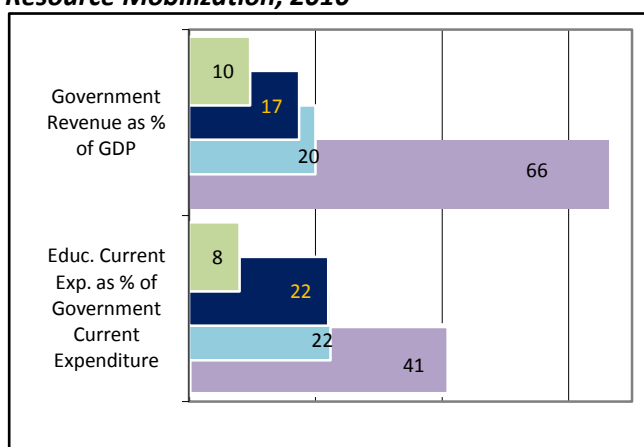
Learning Quality 2012 or Most Recent Year

The information available on the quality of learning (*Goal 6*), based on the SACMEQ international assessment, underlines the relative weakness of pupils' learning. Indeed, in 2000, only 32 percent of pupils finishing primary Grade 6 (against an average of 56 percent for all participating countries) mastered the minimum required knowledge in reading (*Reading for meaning: reads on or reads back in order to link and interpret information located in different parts of the text*). In 2007 this share had dropped to 27 percent, well below the average of all participating countries (63 percent). The level in math is equally cause for concern. In 2007, only 8 percent of Zambian pupils (against 38 percent on average for all participating countries) mastered the minimum required competences in math (*Beginning numeracy: Translates verbal or graphical information into simple arithmetic problems. Uses multiple different arithmetic operations, in the correct order, on whole numbers, fractions and/or decimals*). These results show that a great number of pupils completing primary Grade 6 are facing failure.

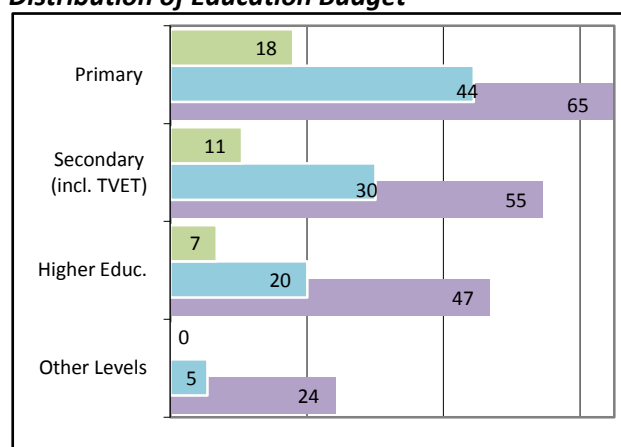
Education Financing 2012 or Most Recent Year



Resource Mobilization, 2010



Distribution of Education Budget



Where resource mobilization is concerned, the government's domestic revenue was 17 percent of GDP in 2010, a level relatively weaker than the Sub-Saharan African average (20 percent). The share of public recurrent expenditure allocated to education was 22 percent in 2009. This is above the old Fast-Track indicative framework benchmark of 20 percent and represents some progress compared to the 2004 value (17 percent). This confirms the priority given to education since 2000.

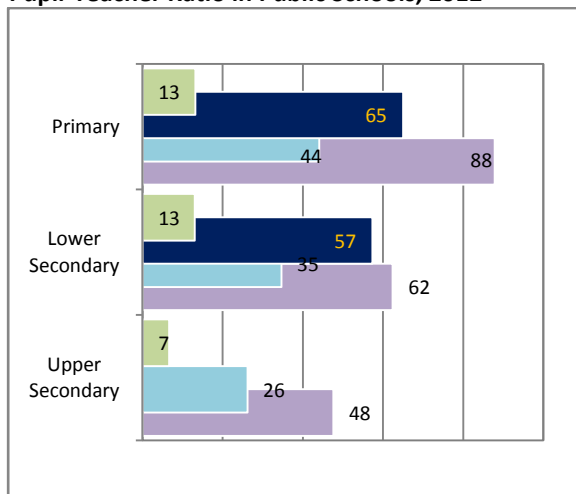
Education Policy Parameters 2012 or Most Recent Year

The primary level public unit cost was 5.5 percent of GDP per capita in 2005, an extremely weak level compared to the Sub-Saharan African average of 11.0 percent. It was 7.2 percent of GDP per capita in 2000. The average remuneration of primary teachers, relatively low in 2003 (2.5 units of GDP per capita), has dropped further to reach only 1.5 units in 2007 (against 3.4 units of GDP per capita on average for Sub-Saharan Africa). Despite this drop in teachers' average salaries, there has been a deterioration in the teaching environment over the period, the pupil-teacher ratio in primary government schools having worsened from 58:1 in 2001 to 65:1 in 2011, a sign of the existence of strong demand for schooling.

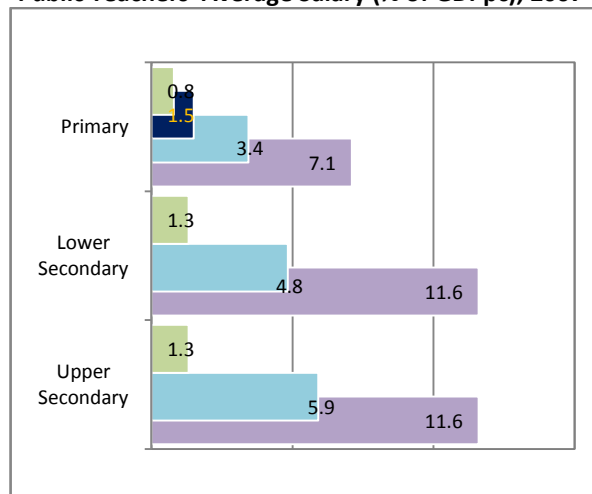
Over the past ten years, private education has not played an important role in the drive towards EFA in Zambia, as ascertained by the share of pupils enrolled in private sector primary schools, which shifted from 2.5 percent in 2002 to 3.1 percent in 2012.



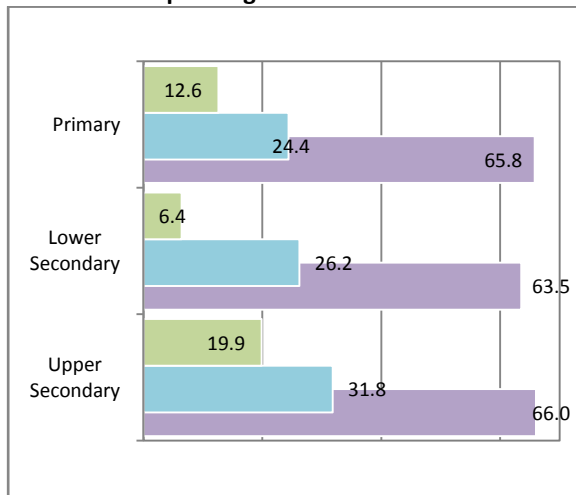
Pupil-Teacher Ratio in Public Schools, 2012



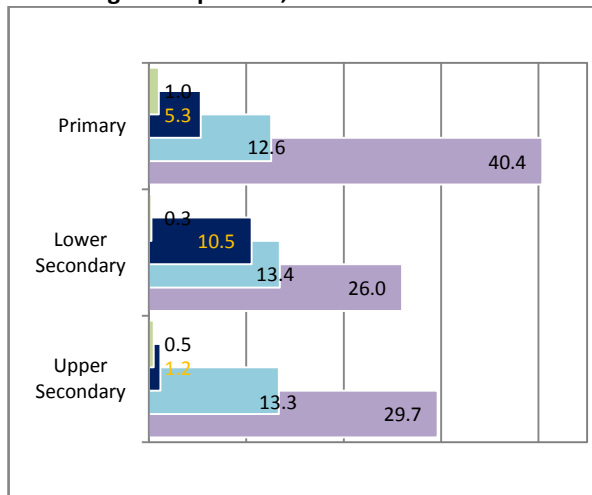
Public Teachers' Average Salary (% of GDPpc), 2007



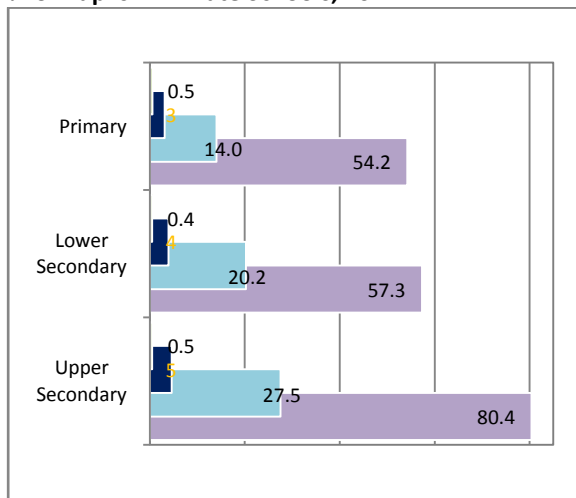
% of Current Spending Other than Teachers' Salaries



Percentage of Repeaters, 2012



% of Pupils in Private Schools, 2012



Public Cost per Student (% of GDP pc, Cur. Exp.), 2005

